

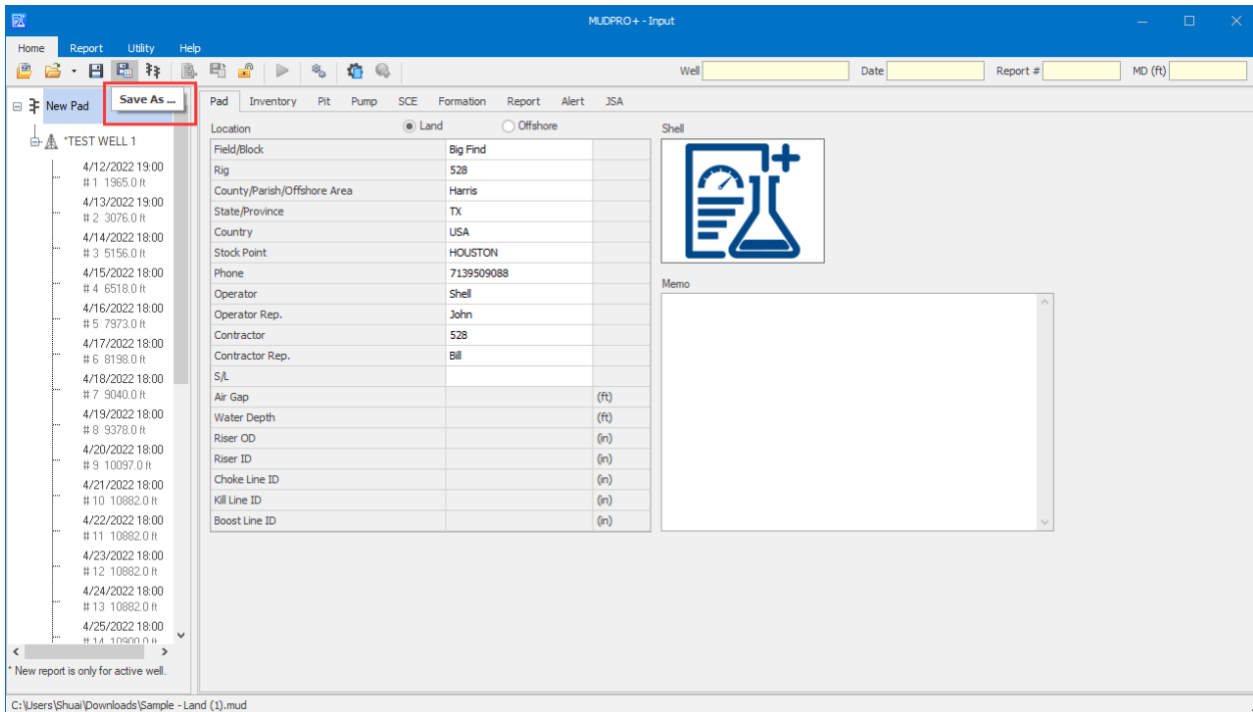


## How to Transfer Wells

In MUDPRO+, every pad (including wells information) save as a case file. Users could manage them through the windows' file manage system.

### Export:

In the “Save As” toolbar, you can rename the case file and click on the “Save” button to save it to a desired path.



### Import:



To open a file, click on “Open...”, then in the Open window, select the file you want to import.

